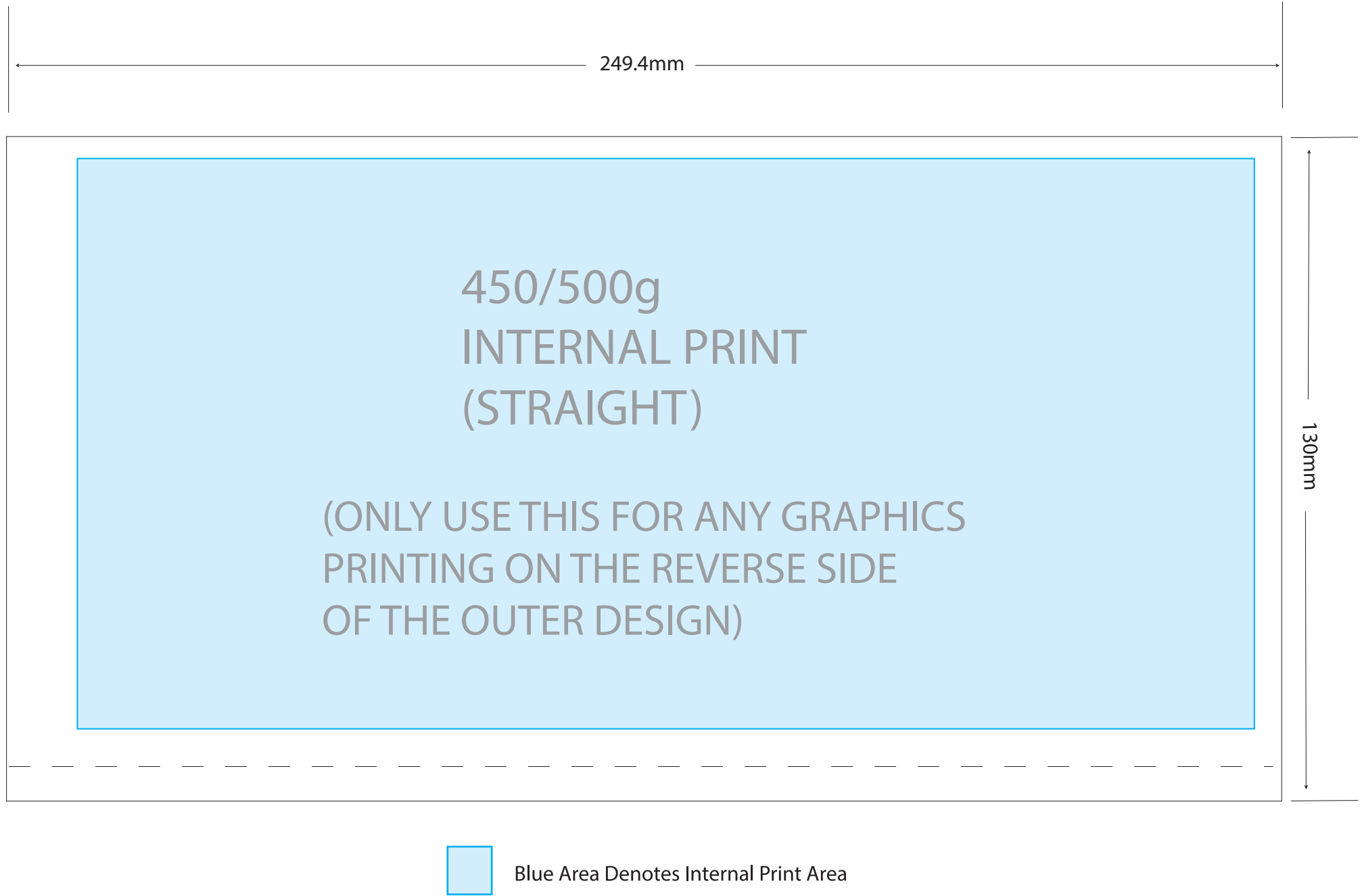
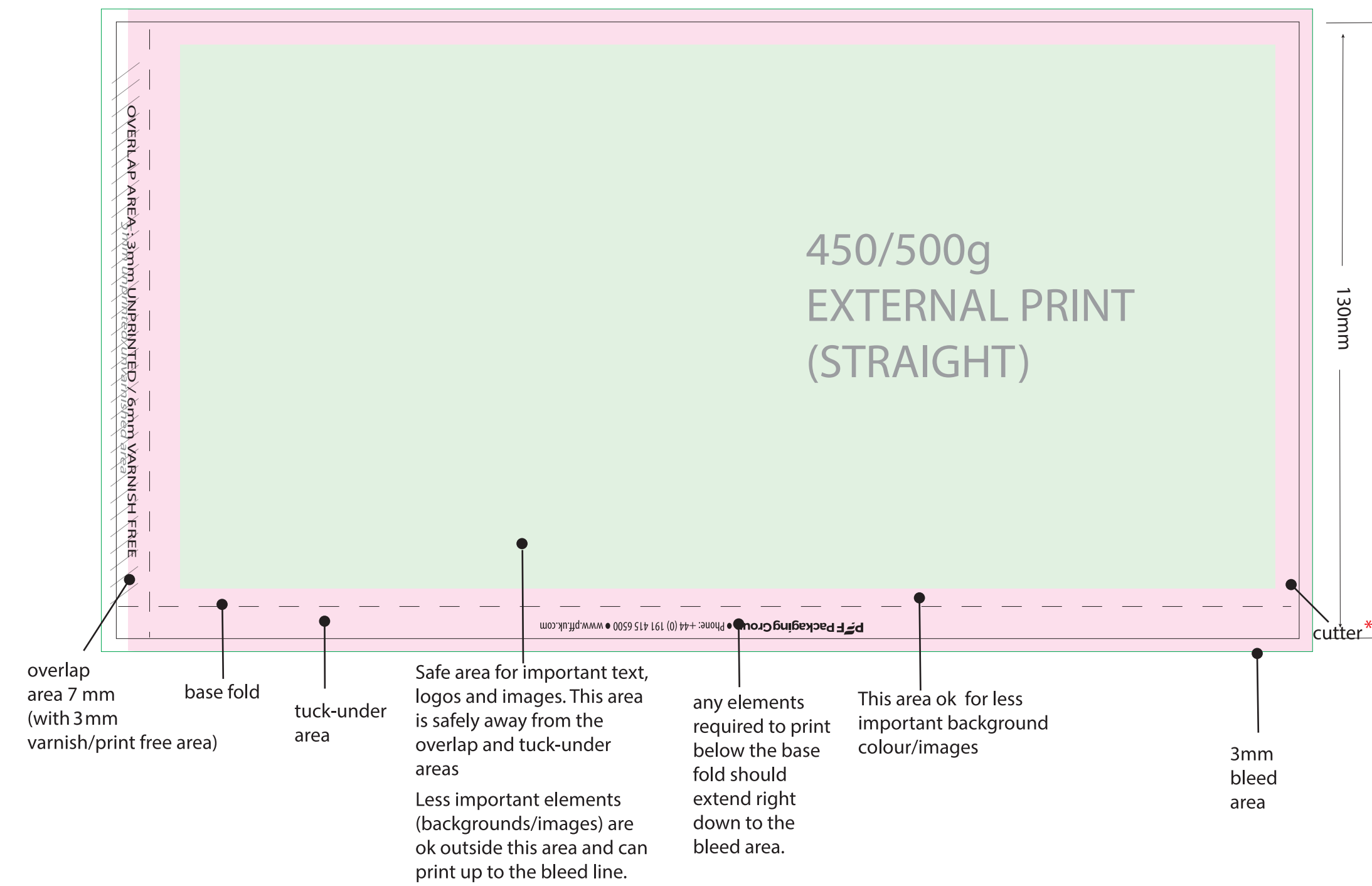
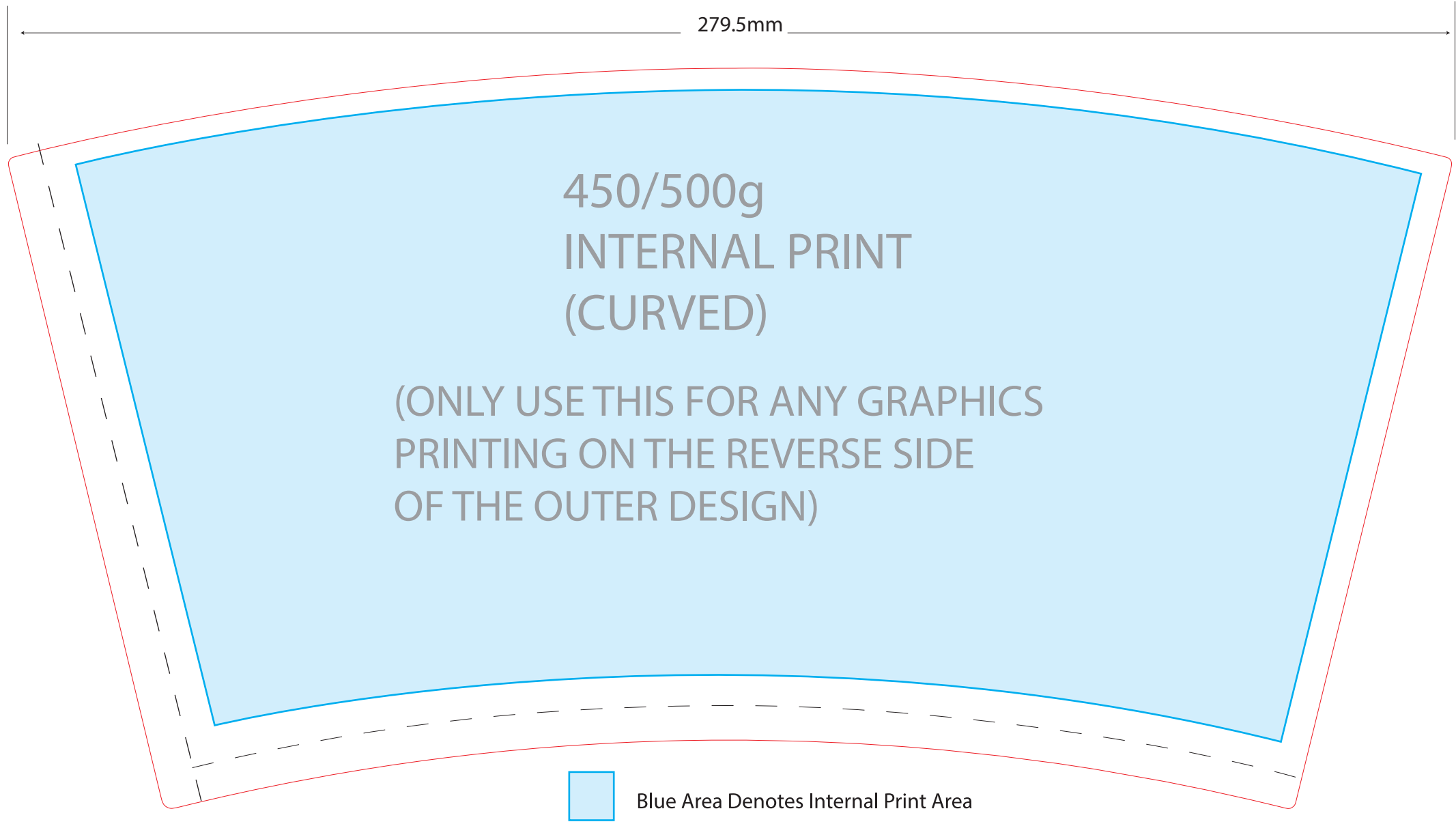
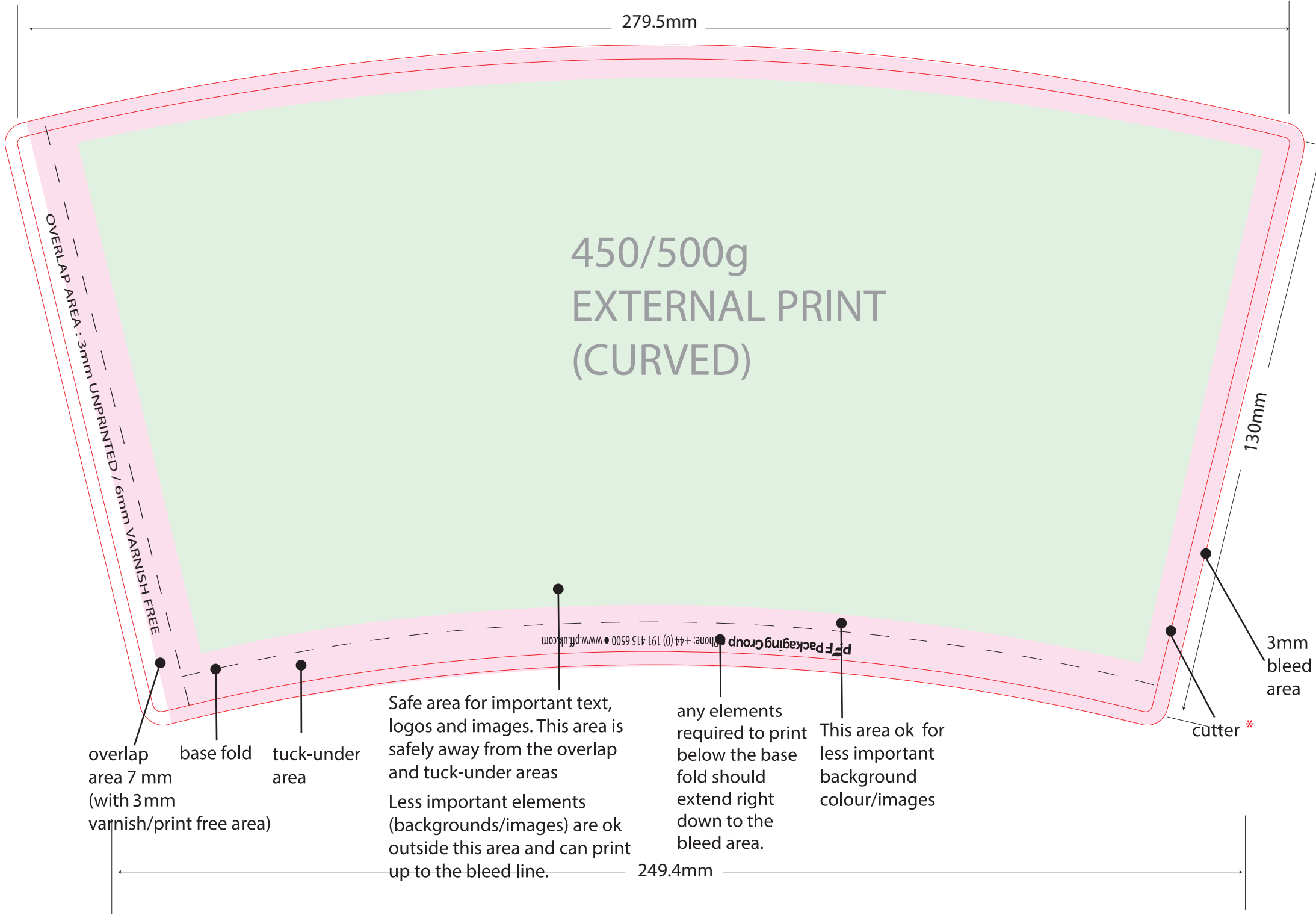


# DESTO 450/500g ARTWORK ELEMENTS



**\* PLEASE NOTE: THERE IS A POSITIONAL CUT TOLERANCE OF +/- 1,5mm**



## 450/500g BASE

**Ideally, the base should be left blank however, if it is absolutely necessary, any design printing on the base should be basic 1 colour linework as per this example.**